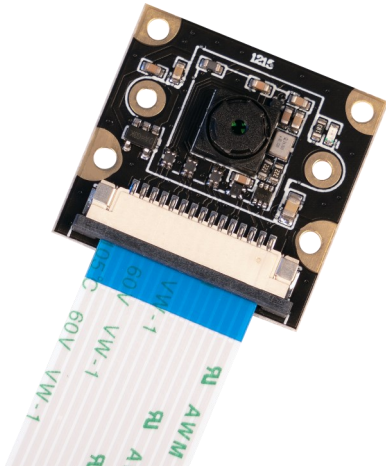


77° CAMERA

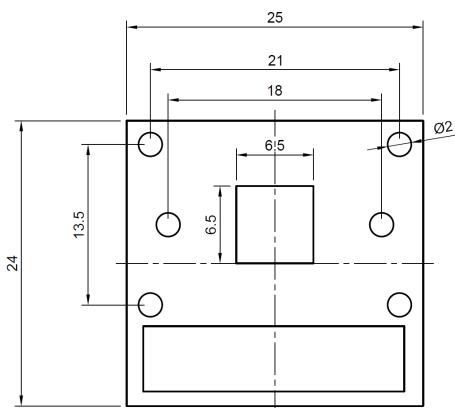
8 MP camera for Raspberry Pi



The camera module for the Raspberry Pi works with the well-known IMX219 chip and delivers best recordings in 8 MP quality with an angle of view of 77°.

Furthermore, it has the possibility to supply additional modules (e.g. lighting etc.) via its own power supply with up to 3.3 V voltage.

Through additional mountings in the board, you can install the camera individually or mount other supplements.



MAIN FEATURES

Sensor	IMX219
Megapixel quantity	8 Megapixel
Angle of view	77°
Dimensions (WxLxH)	25 x 24 x 6 mm
Weight	4 g
Scope of delivery	Camera, Cable

OTHER SPECIAL FEATURES

Resolution	3280 x 2464 Pixel
Video resolution	1920 x 1080 @ 30 FPS
Interface	Camera Serial Interface CSI
Cable length	150 mm
Focal length	2.85 mm
Aperture (F)	2.0
Distortion	< 1%
Lens dimension	6.5 mm x 6.5 mm
More specifications	4 holes for screws provide 3.3V power output

FURTHER DETAILS

Article number	RB-CAMERA-JT-V2-77
EAN	4250236824239
Customs tariff number	84733020